



Exciting New Additions to DVA

Our Latest Chair & Cushion Products

Pride® C101 Riser Recliner Powerlift



- Riser Recliner delivers superb value, excellent quality and luxurious comfort.
- Quiet and smooth operation
- Stylish design

✓ RAP # AC06

Code	Description	S.W.L
CHP197050	C101 Riser Recliner - Pecan	147kg

aspire Adjustable Day Chair



- A high back orthopaedic chair that offers adjustability, comfort and support
- Depth Adjustable
- Contoured Backrest

✓ RAP # AC01

Code	Description	SWL
CHP208025	Aspire Adjustable Day Chair - Latte Vinyl	160kg
CHP208030	Aspire Adjustable Day Chair - Ink Vinyl	160kg

aspire Padded Footrest



- Comfortable Resting Solution
- Height Adjustable
- Padded Surface
- Non-Slip Tips
- Powder Coated Steel Frame

✓ RAP # AC07

Code	Description
CHP208080	Aspire Padded Footrest - Champagne Vinyl
CHP208085	Aspire Padded Footrest - Slate Vinyl

JAY® Fusion Cushion



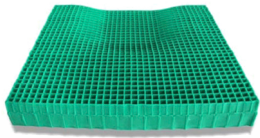
- Multi-Layered, Contoured Foam Base
- Pelvic Loading Area
- Available with Jay Flow Fluid or ROHO Dry Floatation Air Inserts

✓ RAP # AE04

Code	Description
PTC571215	Cushion - Jay - Fusion 17in x 16in
PTC571216	Cushion - Jay - Fusion - 19in x 19in
PTC571230	Cushion - Jay - Fusion - 20in x 18in
PTC571231	Cushion - Jay - Fusion - 20in x 19in
PTC571240	Cushion - Jay - Fusion - 22in x 18in
PTC571245	Cushion - Jay - Fusion - 22in x 22in
PTC571246	Cushion - Jay - Fusion 17in x 20in

Our Latest Chair & Cushion Products

EQUAGEL Protector

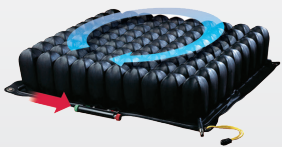


- Low-profile advanced comfortable cushion
- Comes with a fluid resistant, vapour permeable cover
- 12 degrees cooler than inflatable cushions

✓ RAP # AE04

Code	Description
PTC551096	Equagel Protector - 18in x 16in

ROHO Quadtro Select MP



- Promotes circulation, and pressure relief whilst cells reduce shear friction
- Quick-and-easy air compartment adjustment

✓ RAP # AE04

Code	Description
PTC593205	Quadtro Select MP 16.75x16.75in (9x9cell)
PTC593220	Quadtro Select MP 16.75x18.5in (9x10cell)



Recline Chair Contoured Overlay



- Pressure area care to the seat, back and leg sections
- Secures to chair with straps

✓ RAP # AC10

Code	Description
PTM636654	Recline Chair Overlay - Repose - Contour

aspire One Way Slide



- Assists in the correct positioning of a person in the back of a chair
- Reduces the risk of strain or injury from falling or slipping

✓ RAP # AP09

Code	Description
TSE673050	Transfer - One Way Slide - Non Slip

ROHO Single Compartment Cushion



- Interconnected cells
- 2 way stretch cover, Hand pump & Repair kit, Operating Instructions

✓ RAP # AE04

Code	Description
PTC543910	Single Compartment LP 18.5x20.25in (10x11cell)
PTC544350	Single Compartment LP 20.25x20.25in (11x11cell)

ROHO Hybrid Elite Cushion



- Multi-Layered, Contoured Foam Base
- Available with Jay Flow Fluid or ROHO Dry Floatation Air Inserts

✓ RAP # AE04

Code	Description
PTC594845SR	1R 14x14in w/HD cover Sensor Ready
PTC594850SR	1R 14x15in w/HD cover Sensor Ready
PTC594860SR	1R 14x16in w/HD cover Sensor Ready
PTC594901SR	1R 15x17in w/HD cover Sensor Ready
PTC594909SR	1R 16x15in w/HD cover Sensor Ready
PTC594911SR	1R 16x17in w/HD cover Sensor Ready
PTC594921SR	1R 16x20in w/HD cover Sensor Ready
PTC594929SR	1R 17x16in w/HD cover Sensor Ready
PTC594931SR	1R 17x18in w/HD cover Sensor Ready
PTC594935SR	1R 18x16in w/HD cover Sensor Ready
PTC594939SR	1R 18x17in w/HD cover Sensor Ready
PTC594946SR	1R 22x18in w/HD cover Sensor Ready
PTC594947SR	1R 22x20in w/HD cover Sensor Ready
PTC594948SR	1R 24x18in w/HD cover Sensor Ready
PTC594949SR	1R 24x20in w/HD cover Sensor Ready
PTC594951SR	1R 20x20in w/HD cover Sensor Ready

aspire Swivel Cushion



- Padded rotating seat useful for transfers from wheelchair to car seat etc
- Reduces strain on user and carer backs

✓ RAP # AP09

Code	Description
TSE673056	Transfer - Swivel Cushion - Aspire